



Valleyview Public School

Valleyview School Proposed Schedule A

Instructional Area

		Sqm			
Classrooms					
	Kindergarten	2	80	160	
	Regular	14	75	1050	
	Small	13	70	910	
	Art	1	80	80	
	Science	2	80	160	
Number of classrooms 32					
Ancillary					
	Graphics	1	120	120	
	Home Ec	1	120	120	
	Inclusive ED	1	65	65	
	INC ED small	8	12	96	
	Drama / Band	1	170	170	
	Cultural Space	1	65	65	
CTS	Wood / Mech e	1	400	400	
Gym	Gym	1	815	815	
	Gym storage	1	80	80	
Library	Library	1	200	200	
sub total				4491	Over Schedule 509
Non instructional area					
	Wrap Around	1	40	40	
	Mechanical	1	189	189	
	Recycling	1	20	20	
	Staff Admin	1	397	397	
	Phys Ed	1	160	160	
	Circulation	1	995	995	
	Wall Area	1	478	478	
	Storage	1	138	138	
	Washrooms	1	115	115	
	Acces Washrooms	1	34	34	
	Flex Space	1	84	84	
	Wiring Network	1	40	40	
	Food Servery	1	40	40	
Sub total				2730	Over Schedule 0
Community Space					
	Community Library and connecting space			150	
	Play Space			80	
	Daycare		Daycare funding		
Sub total				230	Over Schedule 230
Total				7451	Over Schedule 739
				Total	

Additional 210 sqm for the Library and 80 sqm for Connection Corridor to the Multiplex-As per NGPS request)

Total Area: 7451 + 210 + 80 = 7741 sqm

Over Schedule: 7741 - 6,713 = 1028 sqm

Instructional Area Form

The "Instructional Area Form" will assist you with reporting the space information for your schools. Please complete a separate form for each school.

1. Enter school information (please enter the information row by row)

Jurisdiction	The Northern Gateway School Division	Total Classroom Instructional Area	2,791.0	Total CTS Area	516.0
Jurisdiction Code	2275	Area Per Student	3.7	Total CTS Rated Capacity	40.0
School Name	Solution for Valleyview Replacement K-12 School	Rated Capacity	40.0	CTS Area - Designated as Outreach	0.0
School Code		Estimated Capacity	796.0		
Facility Name		Total Facility Instructional Area	4,820.0	Total Phys Ed Area	894.0
Facility Code		Designated Lease Space - Not For Profit	0.0	Total Phys Ed Area Rated Capacity	0.0
Building ID		Designated Outreach Space	0.0	Phys Ed Area - Designated as Outreach	0.0
Grade Configuration	K	Net Classroom Instructional Area	2,791.0		
	12			Total Library Area	619.0
				Total Library Rated Capacity	0.0
Notes	Solution for Valleyview Replacement K-12 School	Total Instructional Space in M ² allocated to the Outreach Program	0.0	Library Area Designated as Outreach	0.0

2. Enter instructional space data

Click [Instructional Space Data](#)

3. Enter Career and Technology Studies (CTS), Physical Activity Space (PAS), and Libraries space data

Click [CTS, PAS, Libraries Space Data](#)

4. Save file

Please save the file with the following file name
A2275-[Pick School Code]-[Pick Facility Code]-IAF-2024

5. Submit the spreadsheet, along with the small scale plan and data sheet, for each school, electronically to edc.cpdata@gov.ab.ca.

Room Number	Code	Area (m ²)	Exempt Space	Modular T-Code	Notes
CLASSROOM L01	CR Classroom	75			
CLASSROOM L02	CR Classroom	75			
CLASSROOM L03	CR Classroom	75			
CLASSROOM L04	CR Classroom	75			
CLASSROOM L05	CR Classroom	75			
CLASSROOM L06	CR Classroom	75			
CLASSROOM L07	CR Classroom	75			
CLASSROOM L08	CR Classroom	75			
CLASSROOM L09	CR Classroom	75			
CLASSROOM L10	CR Classroom	75			
CLASSROOM L11	CR Classroom	75			
CLASSROOM L12	CR Classroom	80			
CLASSROOM L13	CR Classroom	70			
CLASSROOM L14	CR Classroom	71			
CLASSROOM S01	CR Classroom	70			
CLASSROOM S02	CR Classroom	70			
CLASSROOM S03	CR Classroom	70			
CLASSROOM S04	CR Classroom	70			
CLASSROOM S05	CR Classroom	71			
CLASSROOM S06	CR Classroom	71			
CLASSROOM S07	CR Classroom	70			
CLASSROOM S08	CR Classroom	70			
CLASSROOM S09	CR Classroom	70			
CLASSROOM S10	CR Classroom	70			
CLASSROOM S11	CR Classroom	69			
SCIENCE 1	SCI Science Room	81			
SCIENCE 2	SCI Science Room	80			
SCIENCE 3	SCI Science Room	72			
SCIENCE 4	SCI Science Room	72			
SCIENCE PREP	SCI Science Room	18			
SCIENCE PREP	SCI Science Room	16			
LARGE ANC.	ANC Ancillary Rooms	172			
SMALL ANC.	ANC Ancillary Rooms	81			
SMALL ANC.	ANC Ancillary Rooms	81			
SMALL ANC.	ANC Ancillary Rooms	88			
INFO SERVICES	BES/COM Computer Room	159			
INFO SERVICES	BES/COM Computer Room	54			

Room Number	Code	Area (m ²)	Exempt Space	Modular T-Code	Capacity	Notes
CTS 1	CTS Career Technology Studies	411			20	
CTS 2	CTS Career Technology Studies	105			20	
					0	
Gymnasium	GYM Gymnasium	815			0	
					0	
GYM STORAGE	GSS Gym Storage Space	79			0	
					0	
LEARNING COM. 1	LIB Library	283			0	
LEARNING COM. 2	LIB Library	94			0	
LEARNING COM. 3	LIB Library	64			0	
LEARNING COM. 4	LIB Library	135			0	
LEARNING COM. 5	LIB Library	43			0	

Solution for Valleyview Replacement K-12 School

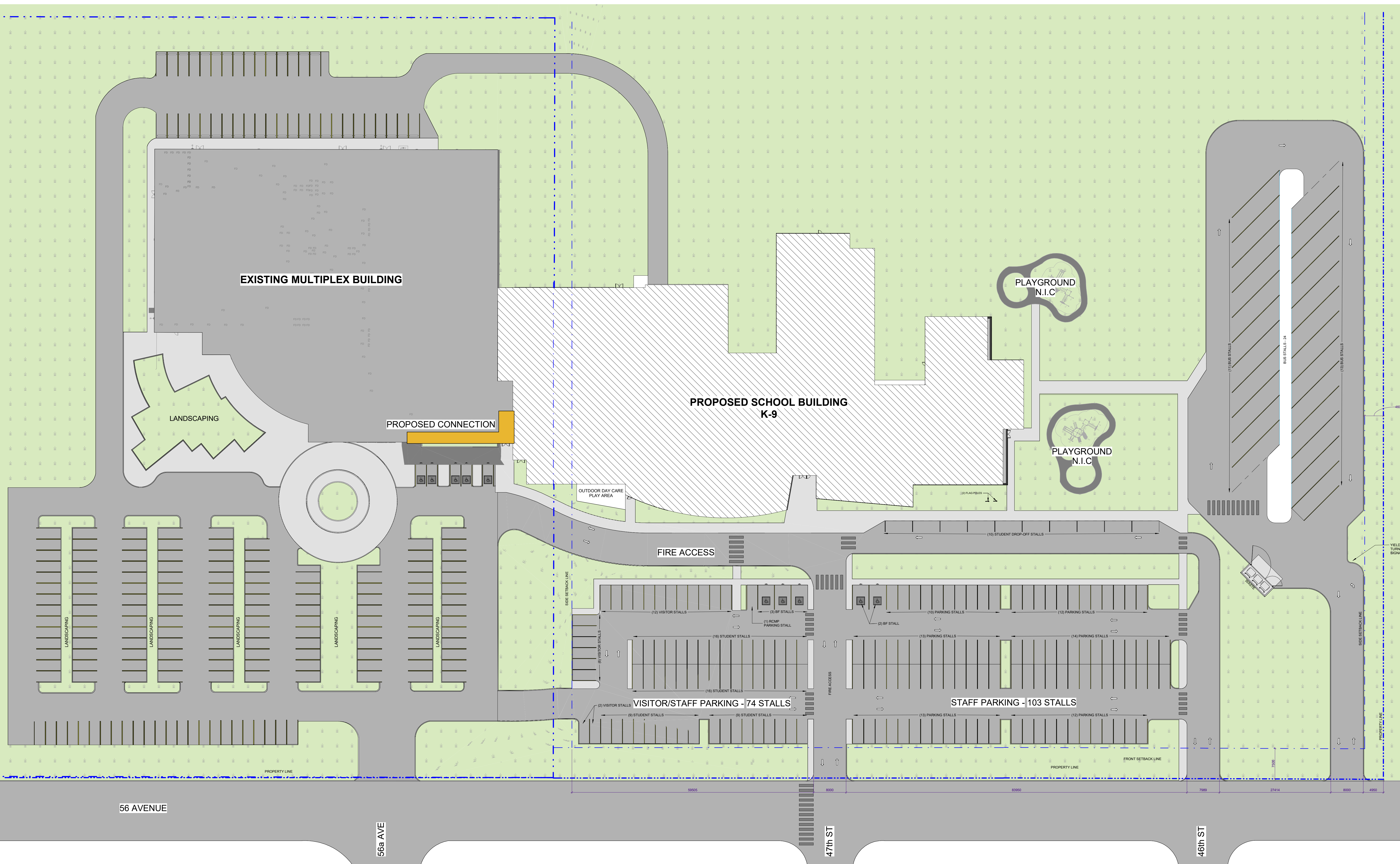
INSTRUCTIONAL AREA	Room Notes	AE Allocated Area	NGPS Proposed Program Area	Differential
Classrooms (16 including mods)				
CLASSROOM L01	MAIN FLOOR	80	75	
CLASSROOM L02	MAIN FLOOR	80	75	
CLASSROOM L03	MAIN FLOOR	80	75	
CLASSROOM L04	MAIN FLOOR	80	75	
CLASSROOM L05	MAIN FLOOR	80	75	
CLASSROOM L06	MAIN FLOOR	80	75	
CLASSROOM L07	MAIN FLOOR	80	75	
CLASSROOM L08	2ND FLOOR	80	75	
CLASSROOM L09	2ND FLOOR	80	75	
CLASSROOM L10	2ND FLOOR	80	75	
CLASSROOM L11	2ND FLOOR	80	75	
CLASSROOM L12	2ND FLOOR	80	80	
CLASSROOM L13	2ND FLOOR	80	70	
CLASSROOM L14	2ND FLOOR	80	71	
CLASSROOM S01	MAIN FLOOR	80	70	
CLASSROOM S02	MAIN FLOOR	80	70	
CLASSROOM S03	MAIN FLOOR		70	
CLASSROOM S04	MAIN FLOOR		70	
CLASSROOM S05	MAIN FLOOR		71	
CLASSROOM S06	MAIN FLOOR		71	
CLASSROOM S07	2ND FLOOR		70	
CLASSROOM S08	2ND FLOOR		70	
CLASSROOM S09	2ND FLOOR		70	
CLASSROOM S10	2ND FLOOR		70	
CLASSROOM S11	2ND FLOOR		69	
TOTAL		1280	1817	537
SCIENCE (3)				
SCIENCE 1	MAIN FLOOR	120	81	
SCIENCE 2	MAIN FLOOR	120	80	
SCIENCE 3	2ND FLOOR	120	72	
SCIENCE 4	2ND FLOOR		72	
SCIENCE PREP	MAIN FLOOR		18	
SCIENCE PREP	2ND FLOOR		16	
TOTAL		360	339	-21
Large Ancillaries (2)				
LARGE ANC.	MAIN FLOOR - DRAMA & BAND	130	172	
LARGE ANC.		130	0	
TOTAL		260	172	-88
Small Ancillaries (3)				
SMALL ANC.	MAIN FLOOR - ECS	90	81	
SMALL ANC.	MAIN FLOOR - ECS	90	81	
SMALL ANC.	2ND FLOOR - ART	90	88	
TOTAL		270	250	-20
Info services (3)				
INFO SERVICES	MAIN FLOOR - GRAPHICS	115	159	
INFO SERVICES	MAIN FLOOR - INCLUSIVE ED.	115	54	
INFO SERVICES		115		
TOTAL		345	213	-132
CTS (2)				
CTS	MAIN FLOOR - INDUSTRIAL ARTS	142	411	
CTS	HOME ECONOMICS / FOODS	142	105	
TOTAL		284	516	232
Gymnasium		815		
GYM			815	
TOTAL		815	815	0
Gym Storage		82		
GYM STORAGE			79	
TOTAL		82	79	-3
Library		286		
LEARNING COMMONS	MAIN FLOOR		283	
LEARNING COMMONS	MAIN FLOOR		94	
LEARNING COMMONS	MAIN FLOOR		64	
LEARNING COMMONS	MAIN FLOOR		135	
LEARNING COMMONS	MAIN FLOOR		43	
TOTAL		286	619	333
TOTAL INSTRUCTIONAL AREA (m2)		3982	4820	838

NON-INSTRUCTIONAL AREA	Room Notes	Allocated Area	Design Area	Differential
Wrap Around		40		
BWAS /WRAP AROUND	MAIN FLOOR		15	
BWAS /WRAP AROUND	MAIN FLOOR		15	
BWAS /WRAP AROUND	MAIN FLOOR		10	
TOTAL		40	40	0
Mechanical		189		
MECHANICAL			181	
TOTAL		189	181	-8
Recycling		11		
RECY / OPERATIONS			23	
TOTAL		11	23	12
Staff/Admin		397		
ADMINISTRATION	MAIN FLOOR		294	
INCLUSIVE ED OFFICE	MAIN FLOOR		10	
INCLUSIVE ED OFFICE	MAIN FLOOR		10	
INCLUSIVE ED OFFICE	MAIN FLOOR		10	
INCLUSIVE ED OFFICE	MAIN FLOOR		11	
INCLUSIVE ED OFFICE	MAIN FLOOR		9	
INCLUSIVE ED OFFICE	MAIN FLOOR		11	
INCLUSIVE ED OFFICE	2ND FLOOR		11	
INCLUSIVE ED OFFICE	2ND FLOOR		11	
INCLUSIVE ED OFFICE	2ND FLOOR		17	
SERVERY	MAIN FLOOR		40	
TOTAL		397	434	37
Phys. Ed		160		
PHYS ED & CHANGE ROOM	MAIN FLOOR		82	
TOTAL		160	82	-78
Circulation		915		
CIRCULATION	MAIN FLOOR		661	
CIRCULATION	2ND FLOOR		216	
ELEVATOR	MAIN FLOOR		6	
MAIN VEST.	MAIN FLOOR		20	
VEST.	MAIN FLOOR (GYM)		11	
VEST.	MAIN FLOOR (ECS)		16	
VEST.	MAIN FLOOR (LIBRARY)		7	
STAIR	MAIN FLOOR		27	
STAIR	MAIN FLOOR - MECH.		8	
STAIR LANDING	2ND FLOOR		9	
STAIR	2ND FLOOR		18	
STAIR	FEATURE STAIR		20	
CONNECTION CORRIDOR			82	
TOTAL		915	1101	186
Wall Area		478		
			257	
TOTAL		478	257	-221
Storage		139		
STORAGE	MAIN FLOOR		12	
KITCHEN	MAIN FLOOR - ECS		9	
STORAGE	MAIN FLOOR		9	
RESOURCE ROOM	MAIN FLOOR (LIBRARY)		14	
STORAGE	MAIN FLOOR (DRAMA)		14	
PANTRY	MAIN FLOOR		30	
LAUNDRY	MAIN FLOOR		3	
STORAGE	2ND FLOOR		3	
STORAGE	2ND FLOOR		16	
TOTAL		139	110	-29
Washrooms		86		
WC	MAIN FLOOR - ECS		6	
WC	MAIN FLOOR		30	
WC	MAIN FLOOR		28	
WC	MAIN FLOOR		39	
WC	2ND FLOOR		28	
WC	2ND FLOOR		30	
TOTAL		86	161	75
Accessible Washrooms		24		
ACCESS. WC	MAIN FLOOR		12	
ACCESS. WC	2ND FLOOR		12	
TOTAL		24	24	0

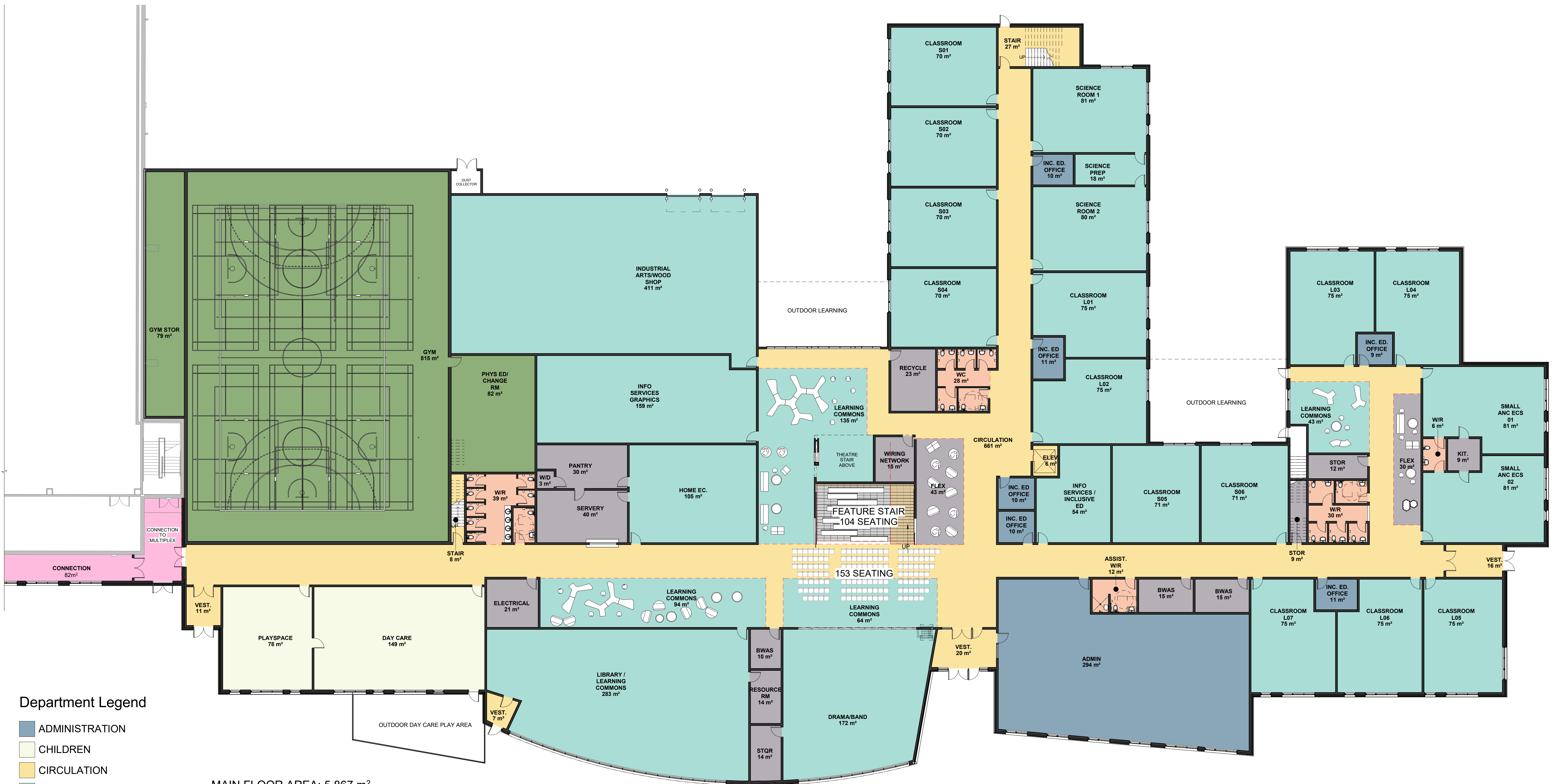
Accessible Washrooms		24		
ACCESS. WC	MAIN FLOOR		12	
ACCESS. WC	2ND FLOOR		12	
TOTAL		24	24	0
Flex Space		172		
FLEX	MAIN FLOOR		43	
FLEX	MAIN FLOOR		30	
FLEX	2ND FLOOR		31	
FEATURE STAIR	2ND FLOOR		61	
TOTAL		172	165	-7
Community Space				
DAYCARE	MAIN FLOOR		149	
PLAY SPACE	MAIN FLOOR		78	
TOTAL			227	
Wiring Network		40		
ELEC.	MAIN FLOOR		21	
WIRING NETWORK	MAIN FLOOR		15	
TOTAL		40	36	-4

	Allocated Area	Designed Area	Differential
TOTAL NON-INSTRUCTIONAL AREA (m2)	2651	2841	190

	Allocated Area	Designed Area	Differential
TOTAL BUILDING AREA (m2)	6633	7661	1028



SITE PLAN - NTS
 VALLEYVIEW K-12 REPLACEMENT SCHOOL CONCEPT



MAIN FLOOR AREA: 5,867 m²
 SECOND FLOOR AREA: 1,792 m²
 TOTAL AREA: 7,659 m²

Department Legend

- ADMINISTRATION
- CHILDREN
- CIRCULATION
- INSTRUCTIONAL
- PHYSICAL EDUCATION
- POOL
- SUPPORT SERVICES
- WASHROOM



Department Legend

- ADMINISTRATION
- CIRCULATION
- INSTRUCTIONAL
- SUPPORT SERVICES
- WASHROOM

MAIN FLOOR AREA: 5,867 m²
 SECOND FLOOR AREA: 1,792 m²
 TOTAL AREA: 7,659 m²



SOUTH PERSPECTIVE - MAIN ENTRANCE AND MULTIPLEX CONNECTION
VALLEYVIEW K-12 REPLACEMENT SCHOOL CONCEPT



Valleyview Public School

SOUTH PERSPECTIVE - MAIN ENTRANCE FEATURE
VALLEYVIEW K-12 REPLACEMENT SCHOOL CONCEPT



Valleyview Public School

SOUTH PERSPECTIVE - MAIN ENTRANCE
VALLEYVIEW K-12 REPLACEMENT SCHOOL CONCEPT



SOUTH PERSPECTIVE - ECS/PLAY GROUND AREA
VALLEYVIEW K-12 REPLACEMENT SCHOOL CONCEPT



SOUTH PERSPECTIVE - MULTIPLEX CONNECTION
VALLEYVIEW K-12 REPLACEMENT SCHOOL CONCEPT



SOUTH PERSPECTIVE - OVERALL CONCEPT BUILDING WITH MULTIPLEX CONNECTION
VALLEYVIEW K-12 REPLACEMENT SCHOOL CONCEPT



SOUTH PERSPECTIVE - VALLEYVIEW MUNICIPAL LIBRARY ENTRANCE
VALLEYVIEW K-12 REPLACEMENT SCHOOL CONCEPT



SOUTH PERSPECTIVE - DAYCARE OUTDOOR PLAY SPACE
VALLEYVIEW K-12 REPLACEMENT SCHOOL CONCEPT